

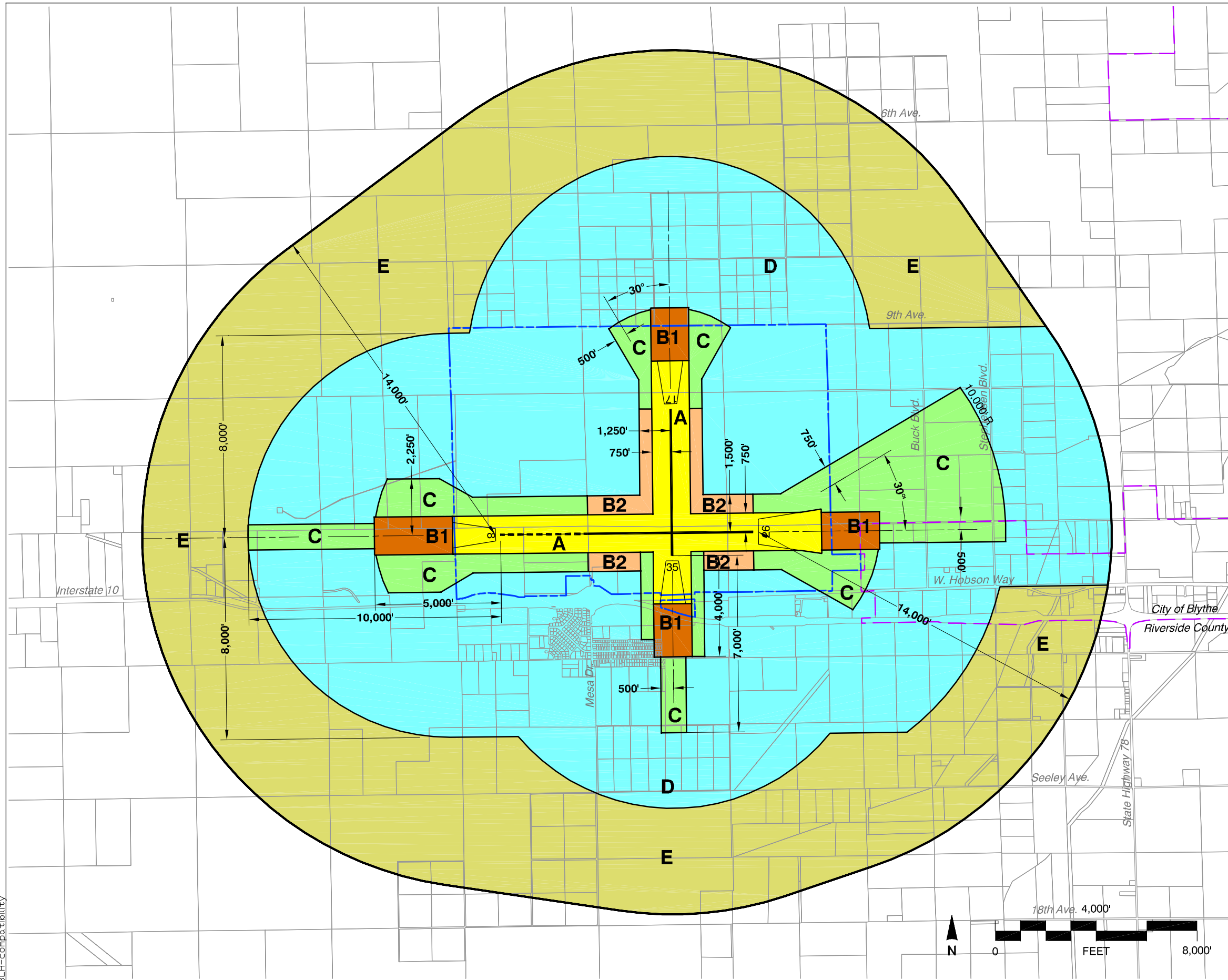
BL. BLYTHE AIRPORT

BL.1 Compatibility Map Delineation

- 1.1 *Airport Master Plan Status:* The *Compatibility Plan* for Blythe Airport is based upon the *Airport Master Plan* adopted by the Riverside County Board of Supervisors in 2001.
- 1.2 *Airfield Configuration:* The *Airport Master Plan* proposes extension of Runway 8-26 3,450 feet westward to a total length of 10,012 feet. No improvements to instrument approach capabilities are planned. These features are reflected in the *Compatibility Plan*.
- 1.3 *Airport Activity:* The *Compatibility Plan* assumes a long-range future activity level of 58,100 annual aircraft operations, including up to 2,200 airline aircraft operations. Total operations in 2003 are less than half of this number and there is no airline service. The long-range numbers are consistent with the *Master Plan* forecast. The *Master Plan* also describes a theoretical “ultimate” airport activity level that includes a large volume of large jet transport aircraft operations. Because the *Master Plan* does not contain recommendations, beyond extension of the runway, that would help generate activity of this magnitude, the “ultimate” activity level has not been explicitly reflected in preparation of the Compatibility Map for Blythe Airport.
- 1.4 *Airport Influence Area:* The airport influence area boundary is defined by the outer edge of the FAR Part 77 conical surface.

BL.2 Additional Compatibility Policies

- 2.1 None.



Legend

Compatibility Zones

- Airport Influence Area Boundary
- Zone A
- Zone B1
- Zone B2
- Zone C
- Zone D
- Zone E

Boundary Lines

- Airport Property Line
- City Limits

Note

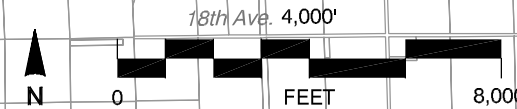
Airport influence boundary measured from a point 200 feet beyond runway ends in accordance with FAA airspace protection criteria (FAR Part 77). All other dimensions measured from runway ends and centerlines.

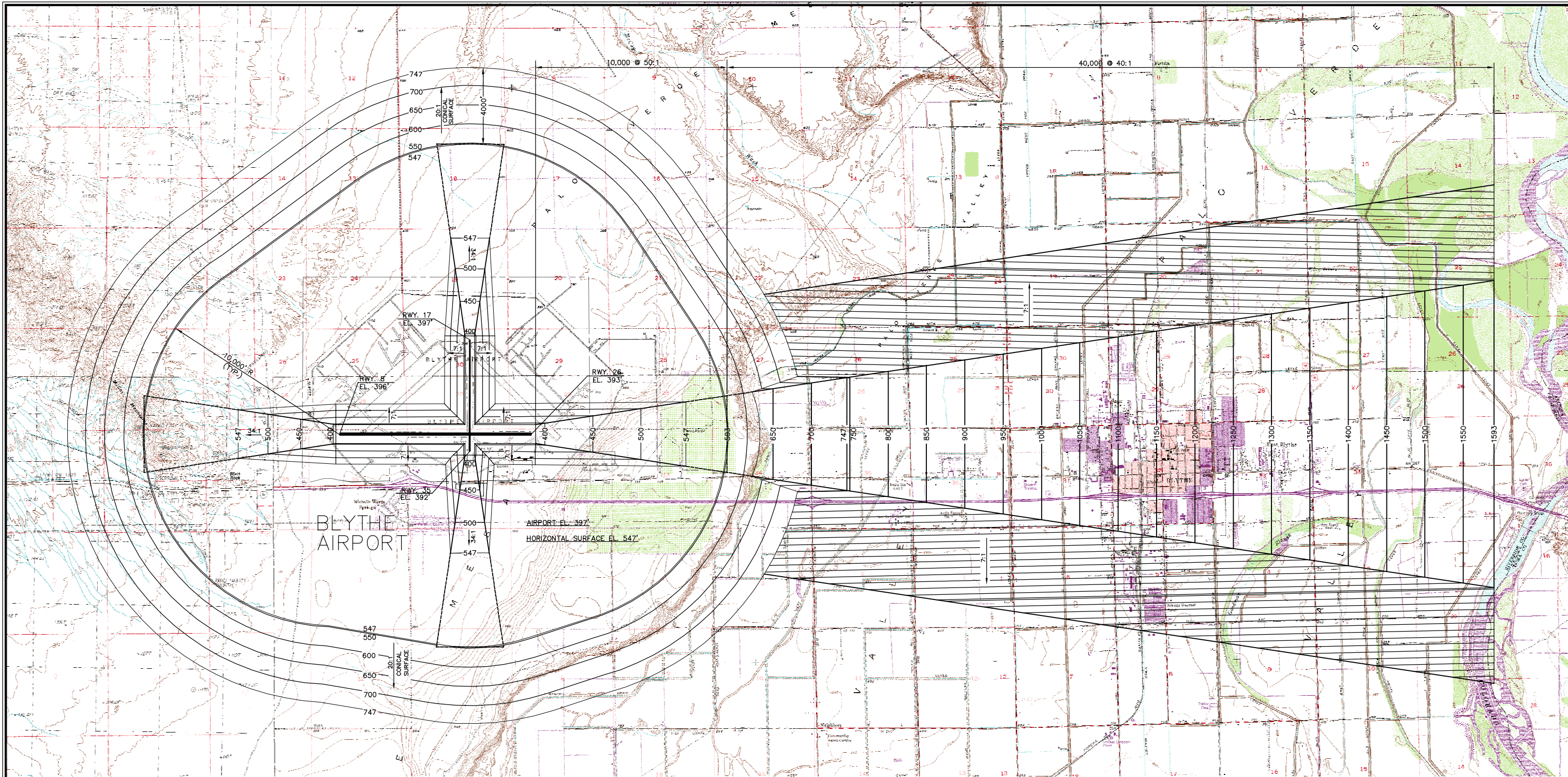
See Chapter 2, Table 2A for compatibility criteria associated with this map.

Riverside County
Airport Land Use Commission
Riverside County
Airport Land Use Compatibility Plan
Policy Document
(Adopted October 2004)

Map BL-1

Compatibility Map
Blythe Airport





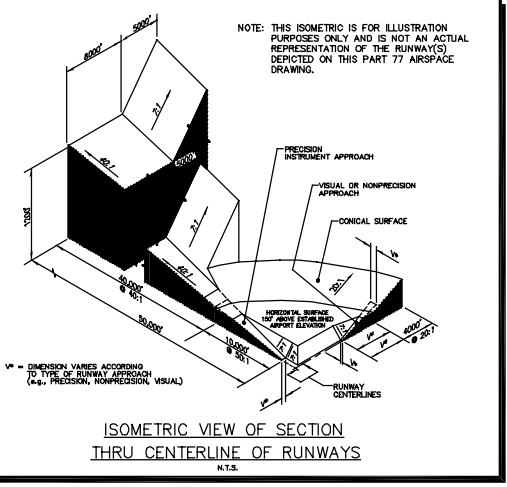
BLYTHE AIRPORT

AIRPORT EL. 397
HORIZONTAL SURFACE EL. 547

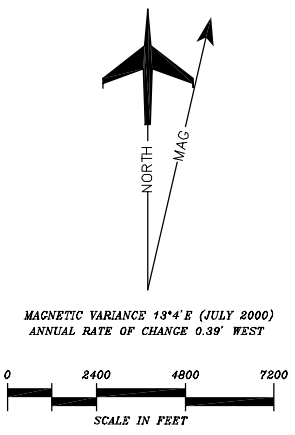
RWY 17
EL. 397

RWY 35
EL. 392

RWY 26
EL. 393



| OBSTRUCTION TABLE | | | | | |
|---|------------------|----------------------------|-------------------|--------------------|-----------------------------|
| Object Description | Object Elevation | Obstructed Part 77 Surface | Surface Elevation | Object Penetration | Proposed Object Disposition |
| NO OBSTRUCTIONS NOTED WITHIN ANY PART 77 AIRSPACE SURFACE | | | | | |



GENERAL NOTES:

- Obstructions, clearances, and locations are calculated from ultimate runway end elevations and ultimate approach surfaces, unless otherwise noted.
- Depiction of features and objects within the primary, transitional, and horizontal Part 77 surfaces, is illustrated on the PART 77 AIRSPACE PLAN, sheet 04 of these plans.
- Depiction of features and objects within the outer portion of the approach surfaces, is illustrated on the APPROACH ZONES PROFILES, sheet 5, 6, and 7 of these plans.
- Depiction of features and objects within the inner portion of the approach surfaces, is illustrated on the PROTECTION ZONES PLAN, sheet 5, 6, and 7 of these plans.
- Existing and future height and hazard ordinances are to be amended and/or referenced upon approval of updated PART 77 AIRSPACE PLAN.

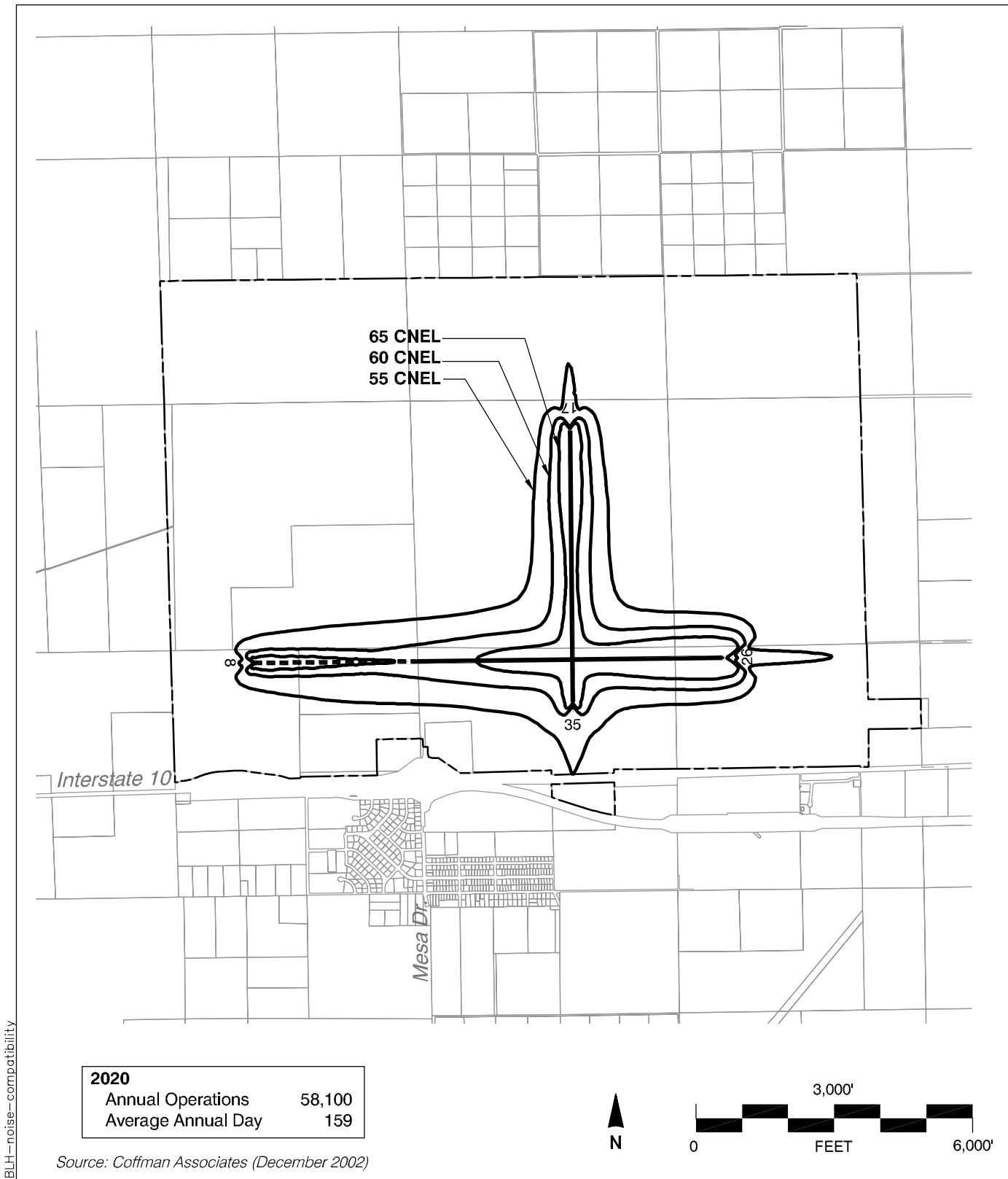
| No. | REVISIONS | DATE | BY | APP'D. |
|-----|------------------|---------|----|--------|
| | REVALUATION | 9/15/97 | - | - |
| | FAA ALP APPROVED | 8/22/88 | - | - |

Adopted by ALUC
October 2004

BLYTHE AIRPORT
PART 77 AIRSPACE PLAN
BLYTHE, CALIFORNIA

PLANNED BY: James M. Harris, P.E.
DETAILED BY: Maggie Rogers
APPROVED BY: James M. Harris, P.E.

September 13, 2000 SHEET 4 OF 9



BLH--noise-compatibility

Map BL-3

Noise Compatibility Contours
Blythe Airport